

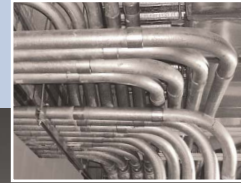
# RIGID STEEL CONDUIT (GRC)



## Quality, Long Lasting Steel Conduit

Allied Rigid Steel Conduit is precision manufactured for dependable, long-lasting value and ultimate protection for electrical conductors. Covered by article 344 of the National Electrical Code® (NEC®), rigid steel conduit is highly resistant to damage from impact. It can be installed in all occupancies and locations, including Class I Division 1 hazardous locations.

Rigid steel conduit, is recognized as an equipment grounding conductor in Section 250.118 of the NEC and also provides excellent shielding from electromagnetic fields.



Heavy Duty GRC

- Hot-dip galvanized to protect against white rust and increase corrosion resistance
- High strength ductile steel for long life and easy bending
- Smooth, continuous raceways for fast wire-pulling
- UL listed to UL 6, manufactured in accordance with ANSI C80.1
- Available in trade sizes 1/2 – 6

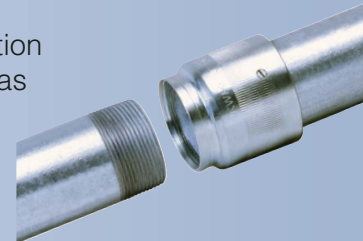
## For Faster Installations

### Use the Kwik-Couple® Connection

*Innovation from the conduit leaders at Allied.*

Allied's patented\* Kwik-Couple rigid steel conduit reduces threaded conduit installation time and cost significantly. Kwik-Couple has an integrated coupling on the conduit or elbows, exactly where you need it.

Just line up the ends, spin the coupling forward onto the next piece and wrench tighten. It's that easy! Trade sizes 2-1/2 – 5.



\* U.S. Patent Numbers 4258936, 4547004.

# RIGID STEEL CONDUIT (GRC)



## Specifications

### FULL ELECTRICAL SYSTEM PROTECTION

Manufactured from mild steel, Allied's Rigid Steel Conduit is highly resistant to damage from impact per NEC® article 344 yet ductile to facilitate bending. Hot-dip galvanized inside and out to provide galvanic corrosion protection, it is also top-coated with a compatible organic layer to protect against white rust. The inside surface is evenly coated for wire-pulling ease, even through multiple 90° bends.

The 3/4" taper NPT threads (ANSI B1.20.1) are full cut and hot galvanized after cutting. Color-coded end-cap thread protectors keep the threads clean, sharp and also provide instant trade size recognition. Trade sizes are color-coded blue, 1/2 trade sizes black, and 1/4 trade sizes red.

### EMI SHIELDING

Allied RIGID is very effective in reducing electromagnetic field levels for encased power distribution circuits, shielding computers and other sensitive electronic equipment from the effects of electromagnetic interference. Visit [www.steelconduit.org/gemi.htm](http://www.steelconduit.org/gemi.htm) to obtain the GEMI (Grounding and Electro-magnetic Interference) software analysis program.

### FULL CODES & STANDARDS COMPLIANCE

Allied RIGID is covered by article 344 of the National Electrical Code. It is listed to Underwriters Laboratories Safety Standard UL 6, and is manufactured to ANSI C80.1, both of which have been adopted as Federal Specifications in lieu of WWC 581. Allied RIGID is recognized as an equipment grounding conductor by NEC Article 250.

Installation of Rigid Metal Conduit shall be in accordance with the National Electrical Code and UL General Information card #DYIX. Master bundles conform to NEMA standard RN2.

### SPECIFICATION DATA

Rigid Steel Conduit shall be hot-dip galvanized and manufactured by Allied Tube & Conduit. Threads shall be hot galvanized after cutting. Rigid steel conduit shall be listed to UL Safety Standard 6 by a nationally-recognized testing laboratory with follow-up service. It shall be manufactured in accordance with ANSI C80.1. Kwik-Couple Rigid steel conduit shall be listed to UL 6 and UL 514B and manufactured in accordance with ANSI C80.1.

Note: Federal specification WW-C-581, Class 1, Type A has been superseded by UL Standard 6, which has been adopted by the federal government.

### Weights and Dimensions for Galvanized Rigid Steel Conduit

Trade Size Designator		Approx. Wt.* Per 100 Ft. (30.5M)		Outside Diameter <sup>1</sup>		Nominal Wall Thickness <sup>2</sup>		Quantity In Master Bundle*	
U.S.	Metric	lb.	kg	in.	mm	in.	mm	ft.	m
1/2	16	82	37.2	0.840	21.3	0.104	2.60	2500	762.5
3/4	21	109	49.4	1.050	26.7	0.107	2.70	2000	610.0
1	27	161	73.0	1.315	33.4	0.126	3.20	1250	381.3
1-1/4	35	218	98.9	1.660	42.2	0.133	3.40	900	274.5
1-1/2	41	263	119.3	1.900	48.3	0.138	3.50	800	244.0
2	53	350	158.7	2.375	60.3	0.146	3.70	600	183.0
2-1/2	63	559	253.5	2.875	73.0	0.193	4.90	370	112.9
3	78	727	329.7	3.500	88.9	0.205	5.20	300	91.5
3-1/2	91	880	399.1	4.000	101.6	0.215	5.50	250	76.3
4	103	1030	467.1	4.500	114.3	0.225	5.70	200	61.0
5	129	1400	634.9	5.563	141.3	0.245	6.20	150	45.8
6	155	1840	834.5	6.625	168.3	0.266	6.80	100	30.5

<sup>1</sup> Tolerances: Trade Size 1/2 to 1-1/2: ±0.015" (0.38mm); Trade Size 2-6: ± 1%  
Length equals 10 ft. (3.05m) with a tolerance of +/- .25 in. (6.35mm)

<sup>2</sup> For information only. Not a requirement of the UL standard.

\* NEMA RN-3 Standard

### Weights and Dimensions for Kwik-Couple® Rigid

Trade Size Designator		Approx. Wt. Per 100 Ft. (30.5M)		Nominal Outside Diameter <sup>1</sup>		Nominal Wall Thickness		Quantity In Master Bundle	
U.S.	Metric	lb.	kg	in.	mm	in.	mm	ft.	m
2-1/2	63	559	253.5	2.875	73.0	0.193	4.90	400	122.0
3	78	727	329.7	3.500	88.9	0.205	5.20	300	91.5
3-1/2	91	880	399.1	4.000	101.6	0.215	5.50	250	76.3
4	103	1030	467.1	4.500	114.3	0.225	5.70	200	61.0
5	129	1400	634.9	5.000	127.0	0.245	6.20	150	45.8

<sup>1</sup> Outside diameter tolerances: +/- .025 in. (.64mm)

<sup>2</sup> For information only; not a spec requirement.

For more information, contact Allied at  
**(800) 882-5543**  
or visit our website at [www.alliedeg.us](http://www.alliedeg.us)



Allied Tube & Conduit  
Registered to ISO 9001:2000  
File Numbers A2106, A1654, A12768

### • Allied Tube & Conduit Corporation - Electrical

16100 S. Lathrop Avenue, Harvey, IL 60426 Tel. 708-339-1610 800-882-5543 Fax 708-339-0615

### Electrical & Support Division

[www.alliedeg.us](http://www.alliedeg.us)

• Allied Tube & Conduit® • AFC Cable Systems® • Power-Strut® & Unistrut® Metal & Fiberglass Framing • Cope® Cable Tray

The trademarks, logos, and service marks displayed on this brochure are owned or licensed by Tyco International Ltd., or its subsidiaries, affiliates, and others (collectively "Trademarks"). All Trademarks not owned by Tyco International Ltd. are the property of their respective owners, and are used with permission or allowed under applicable laws.